

F430




SEALINE

MAGNETISE YOUR MIND
SEALINE F430





MAKE YOUR LIFE ONE LONG WEEKEND

SEALINE F430

LARGE BATHING PLATFORM

Celebrate life on the water in full comfort. The bathing platform features hydraulics for easy lowering, and the steps automatically extend.

SUN LOUNGE AT THE BOW

There are plenty of adjustable cushions to create the relaxing space you like. Two extra seats and atmospheric pop-up lights make this spot even more enticing.

FLYBRIDGE OF GRAND COMFORT

The flybridge offers plenty of space for your entire family and guests. Here you have a range of enjoyable options – from sunbathing to barbecuing under open skies.

UNLIMITED PANORAMIC VIEW

Take in the spanning view of the water and coast. The floor-to-ceiling windows are the largest of their class and combine a bright atmosphere with stunning sights.

3 DOUBLE CABINS ACROSS 43 FEET

Exclusive in the entire boating world: the F430 is the first yacht of this class to offer three comprehensively equipped and luxuriously fitted double cabins on request.



TAKE YOUR FASCINATION TO NEW HEIGHTS

The F430 is a Sealine through and through – crowned with a captivating flybridge. Reigning over the characteristic, unmistakably large panorama windows is a viewing platform that satisfies your every desire. High-speed performance ensures that the everyday hectic quickly disappears behind the horizon. The new Sealine F430 – an experience that every yacht enthusiast is magnetically drawn to.



SEALINE F430

The flybridge on the Sealine F430 was designed with just one goal in mind: to make you want to spend every moment on it. You sail into the rising sun while enjoying the open-air helm. You take in the setting sun during an al fresco dinner. The time in between is spent on the large sun lounge or partaking of freshly grilled delights directly from the kitchen ensemble in the rear of the flybridge.



enjoy the
LIGHT

feel the
SPACE

combine functionality with
DESIGN

The entire Sealine range is born of the same values: each yacht features wide interior spaces, an amazing quantity of natural light and outstanding design with German engineering inside. As for these trademarks, the F430 displays the true spirit of Sealine.





SINGULAR DESIGN. MULTIPLE THRILLS.

You have everything your heart desires on the flybridge. But because the allure of a true Sealine lies in its variety of options, the F430 also offers alternative spaces of leisure for you and your family. The cockpit below the flybridge casts shade and can be equipped with an additional outdoor barbecue. The bow awaits you with a generous sun lounge. It is always your choice what area suits your mood and your occasion.



EXTERIOR DESIGN



Spacious sun lounges on the bow feature an adjustable back and invite you to relax under the blue skies anytime of the day. The exceptional architecture of Sealine yachts ensures that you can daydream with full peace of mind. The bulwark, featuring an unparalleled height, guarantees deep relaxation in any situation – even at times of sportier driving.





The Sealine engineers have designed the bathing platform to be more than just another extra. It is the final step to enjoying perfect independence. A private beach which you can take with you. Out to the open sea. Into a secluded bay. For this reason, the bathing platform on the Sealine F430 has everything your heart could desire. Teak flooring. Hydraulic operation. And a retractable ladder that automatically adapts to the lowered platform.



When it's time to move into the shade, you can comfortably take a seat in the covered cockpit. With the lighting and sound system integrated into the ceiling, you can design the ambience to suit your every desire. To experience the highest feeling of life on deck, you now only need to do one thing: open up the inside to the outside, creating one relaxation area for enjoying life across one level.



Enjoy the seclusion and privacy that the ocean provides during the day – and then gather together with guests in the evening. Thanks to the layout of the seating, the mood lighting, the inspiring design, your Sealine F430 becomes an irresistible location for coming together. Whether you are meeting up with friends again or finding new ones in the harbour – everyone will feel privileged to come aboard your yacht. For a sundowner. For dinner. For a party.



A FIRST IN CLASS: 3 DOUBLE CABINS ACROSS 43 FEET

With the Sealine F430, voyages are so luxurious that you will want to share them with others. As the F430 is the world's first 43-foot yacht which can be outfitted with three double cabins on request, up to six people can enjoy a unique experience.



INTERIOR DESIGN



Each element in the saloon exudes harmonious elegance. Everywhere you look, you see premium materials crafted to perfection. Each detail is part of the aesthetic bigger picture. Even the helm station is a designer piece of furniture – with instruments which seamlessly blend into the ambience. The double helm chair is adjustable in height to enable most comfortable driving. When turned 90 degrees, it becomes a natural part of the living space.



Is cooking a chore or a pleasure? The difference is in the atmosphere. Which is why the galley of the Sealine F430 appears as a designer kitchen in an urban loft – with a 360° view of the water! Stylish strips of lighting and high-gloss working surfaces create an aesthetic space in which you can conjure up several courses with more and more joy every time.





You want to enjoy life 24 hours a day. Even in your sleep. Which is only possible in cabins that cater for all your senses. With colours that inspire relaxation. With materials that provide pure pleasure. If you appreciate the aesthetics of high-class designer hotels, you will feel right at home on your Sealine F430. As an option, the lower deck comes with three double cabins, individually designed to feature the owner's personal mark. Equipped with full-sized beds and views of the ocean. The 43-foot class has been redefined.



The bathroom is the space where you start your day. It should be a room that puts you in a positive mood. Where you can recharge and rejuvenate. Like the composition of purist fittings, fine woods, exotic natural stone and gentle lighting does on board the Sealine F430. As the yacht owner, your morning begins even better thanks to your own ensuite bathroom.



When you think of motor yachts, does a thrilling driving experience also come to mind? Then opt for the Sealine F430 – with its Volvo Penta IPS engines. Even the standard engines with 760 hp accelerate the yacht up to 28 knots. If you ever wanted to experience just how agile 43 feet can be, we boost the performance of your Sealine to 880 hp with two Volvo Penta IPS600 engines and a max. speed of 32 knots.



SEALINE F430



BOAT MONITOR

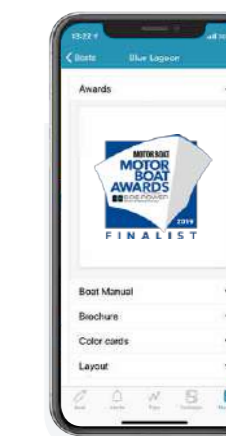
- FRIDGE**
Turn on/off remotely
- LIGHTS**
Turn on/off
- HATCH/DOOR SENSOR**
Monitor unauthorised access
- SHORE POWER**
Monitor connection
- ENGINE**
Monitor activity
- MOTION SENSOR**
Collision and grounding detection
- FUEL TANK**
Monitor level
- WATER TANK**
Monitor level
- BATTERY BANK**
Monitor level
- GPS, WIND AND SPEED DATA**
- ANCHOR WINCH**
Monitor activity
- BOW THRUSTER**
Monitor activity
- BILGE PUMP**
Monitor activity

*Control and sensors depend on the configuration of your Sealine.

MY SEALINE SAFETY CLOUD YOUR ENTIRE YACHT IN YOUR HAND

Everyone is talking about the digital future. But Sealine is implementing it – with the first cloud-based telematics system for series production motor yachts. You can access your boat's technical data and functions live via the mobile app or via the owner's area at www.sealine.com

Intelligent functions such as BoatMonitoring, eLogbook and eServicebook enable you to keep an automatic logbook, stay on top of all servicing dates and monitor your yacht seamlessly.



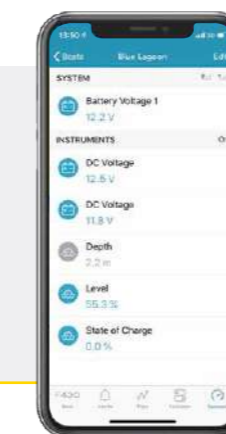
MANUALS

All manuals and instructions within one app.



POSITION

Track your position in real time.



SENSORS

Monitor your charge levels and devices.



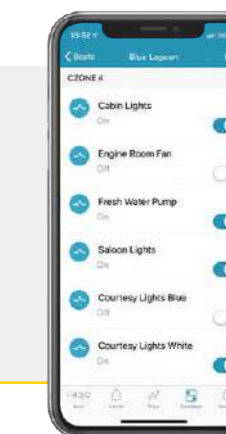
ALARMS

Push notifications on current events.



TRIP LOG

Share your cruises and track data with friends.



CONTROL

Operate your electronic devices by remote control.



LIVE REPORT

Direct contact to your dealer for quick help.

OUTRUN THE ORDINARY

Outstanding boating characteristics are part of the Sealine experience. From the shape of the hull to the engines, we have pulled out all the stops to ensure the Sealine F430 gives you special moments on the water.

SEALINE F430



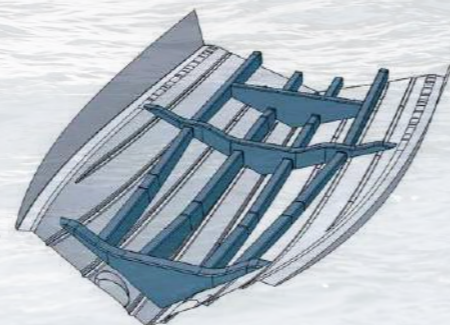
IPS DRIVE AS STANDARD

Choose your twin Volvo Penta IPS engines: IPS500 or IPS600. The highest-performing engines produce 880 horse-power and achieve a speed of 32 knots.



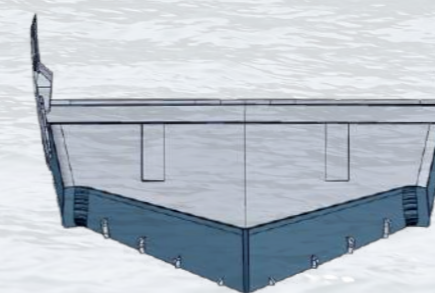
LAMINATED POWER GRID

The hull reinforcements of the Sealine F430 are elaborately laminated – giving you the advantages of a high-strength yacht with a reduced weight.



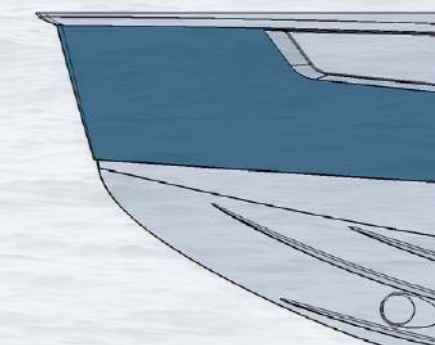
DEEP V-SHAPE KEEL

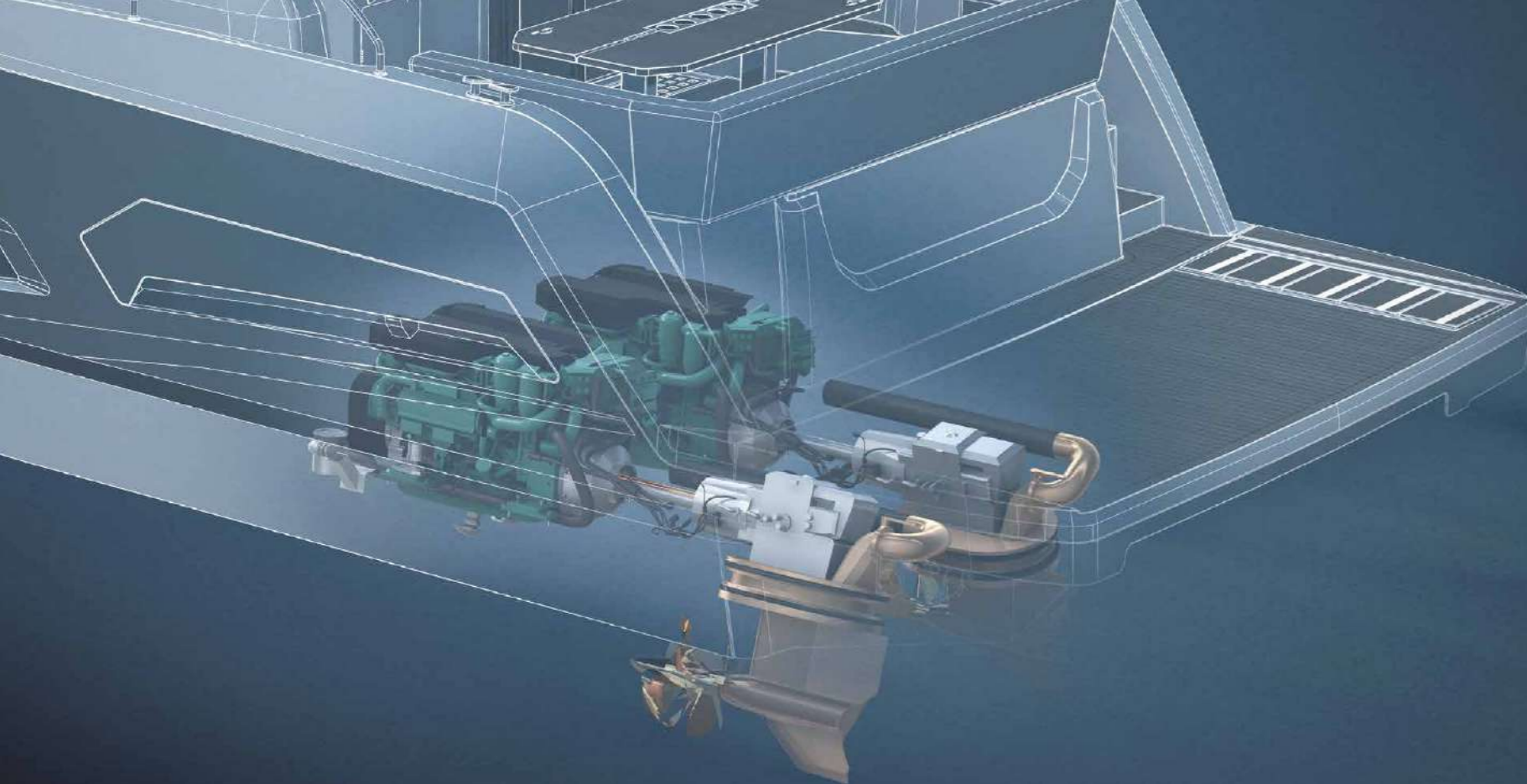
The Sealine F430 hull has a deep-V shape. This means the Sealine is exceptionally stable in the water, making for more comfortable boating.



UPRIGHT STEM

The vertical bow with its curved foot pierces the waves elegantly and efficiently. This, in turn, results in more comfort and more boating pleasure.





PRINCIPAL DIMENSIONS (according to ISO 8666)

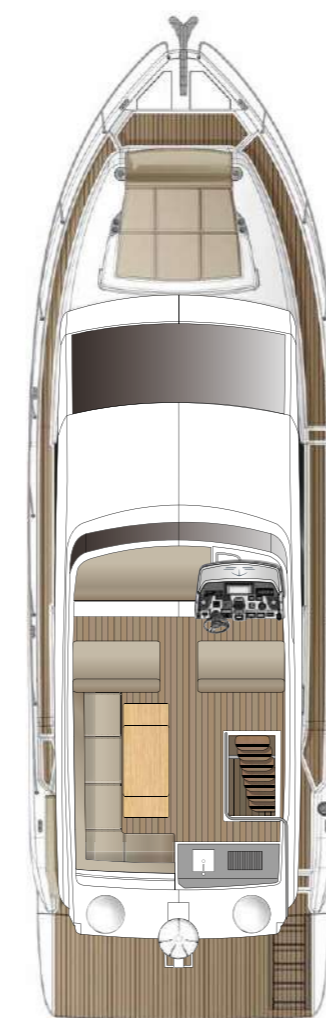
Length Overall	13.55 m	44' 5"
Length of Hull	11.73 m	38' 6"
Beam	4.20 m	13' 9"
Height above waterline incl. mast	5.37 m	17' 7"
Height above waterline excl. mast	4.14 m	13' 7"
Draught (Tmax)	1.25 m	4' 1"
Fuel capacity	1,100 l	242 UK gal
Water capacity	450 l	99 UK gal
Displacement	13.58 t	13.37 UK t
CE Category	B	C
Max. person	12	14

ENGINE STANDARD

2 x Volvo Penta IPS500, Pod Drive 28 knots*

ENGINE OPTIONS

2 x Volvo Penta IPS600, Pod Drive 32 knots*



FLYBRIDGE

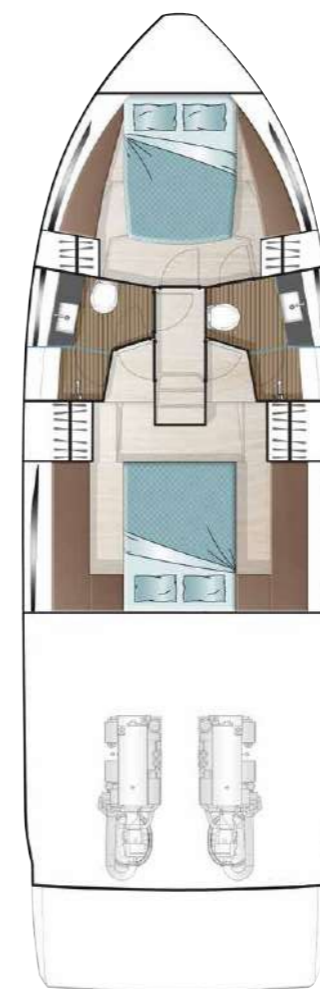
with optional wetbar



MAIN DECK

C1

STANDARD



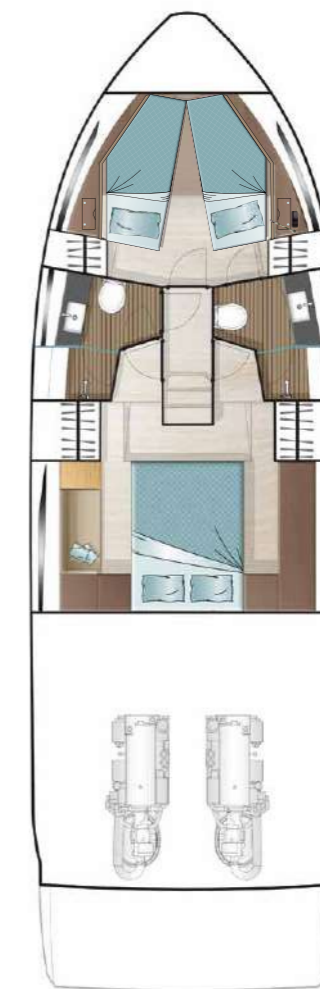
LOWER DECK

bow cabin with queen size bed, standard aft cabin full beam with queen size bed

A1

B1

OPTION A



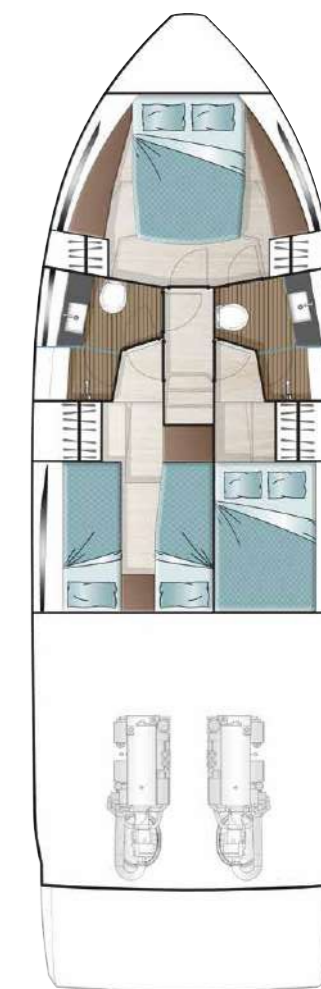
LOWER DECK

bow cabin with scissors berth

A2

B2 vanity area in owners cabin option

OPTION B



LOWER DECK

aft cabin portside with twin bed and aft cabin starboard side with double bed

A1

B3

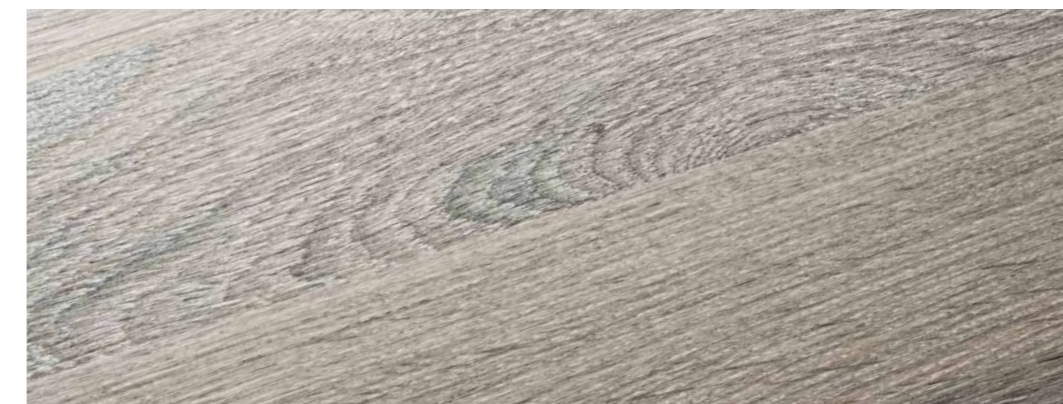
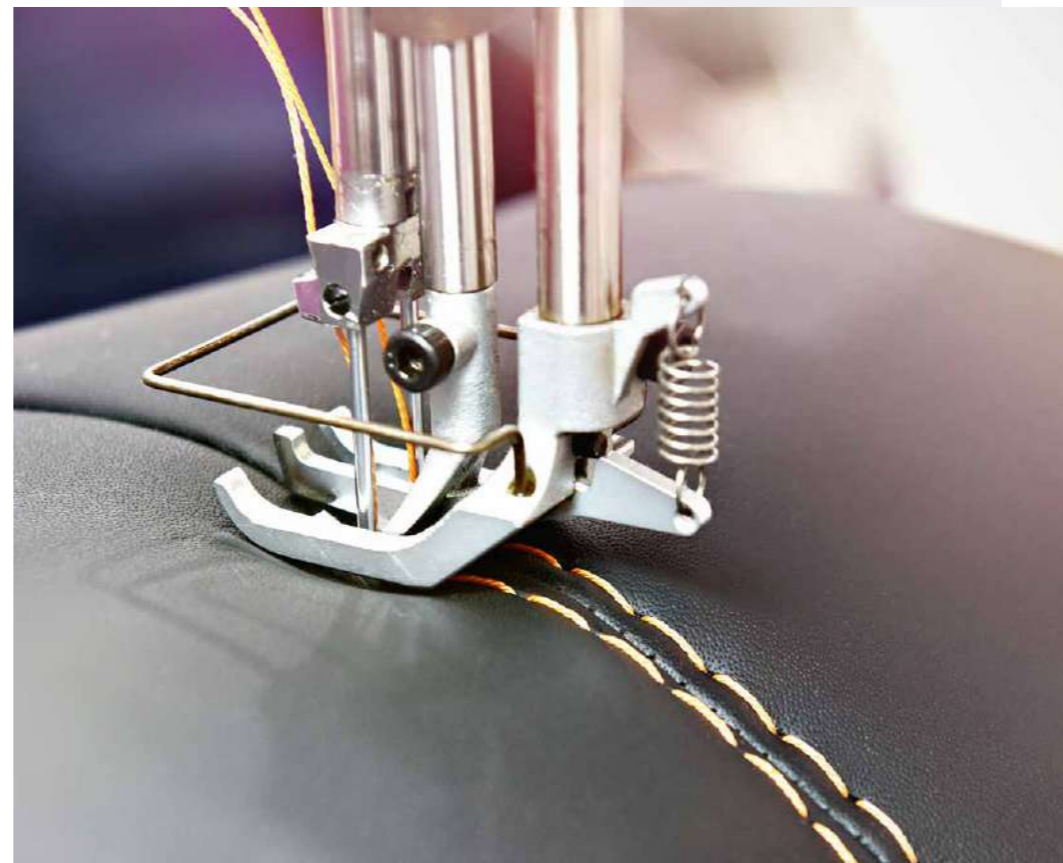
* All performance figures are given in good faith and are intended as an indication. These figures cannot be guaranteed as top speed in particular is affected by the cleanliness of the hull, conditions of the propellers, weight carried and air/sea temperature. Performance is related also to the optional accessories selected. SEALINE reserves the right to change specifications in line with the company policy of improvement through research and development. Errors and omissions expected. Please check with your dealer for a full list of inclusions. This brochure is not contractual. The yachts depicted partly comprise special equipment not included in the standard scope of supply. Illustrations may not correspond with current versions. Subject to alterations in design and equipment without notice and errors expected. Photos: Nico Krauss. Renderings: Björn Willer, ALPHA3. Print: EGGERSDRUCK. Artwork: smz GmbH.



LIMITLESS VARIETY

MATCHLESS QUALITY

The manufacturing quality of the Sealine F430 is a multi-sensory experience. Exquisite materials spoil the eye with every glance. A subtle scent of finest leathers blends with the pleasing feel of elegant woods. Anything you see or touch was masterfully handcrafted by superb boat builders. Enjoy an exclusive atmosphere that can only be created by the perfect match of sophisticated details.



EACH SEALINE IS ONE OF A KIND

With your personal selection of colours and textures, you transform your Sealine into a unique expression. Five teak variants are available for the deck alone. We also offer special materials for cockpit seats and sun cushions. For the interior you can choose between different furniture woods, upholstery and curtains, while underfoot, select from wood or carpet.



GERMAN PRECISION AND PASSION FOR THE SEA. THAT'S WHAT A SEALINE IS MADE OF.

In 2013, the Sealine brand found a worthy new home on the German Baltic coast. At our shipyard in Greifswald we have perfected the interplay between state-of-the-art manufacturing techniques and skilled employees.

The outstanding people in our team perform their work with enormous experience, a deep understanding of the customer and great dedication.

In addition, we are thrilled to cooperate with our British partner Bill Dixon. Working closely with our concept design team, the award-winning naval architect is creating a new range of innovative Sealine models.

Above all, we believe that what holds true for the experienced boater, also holds true for us as boat builders. Beyond the individual skill, there is something which genuinely binds all of us at Sealine: A great passion for the sea.



DROP ANCHOR AT SEALINE

YOUR LOCAL SEALINE DEALER IS LOOKING FORWARD TO YOUR VISIT.



F430



www.sealine.com

Sealine Ladebower Chaussee 11 D-17493 Greifswald